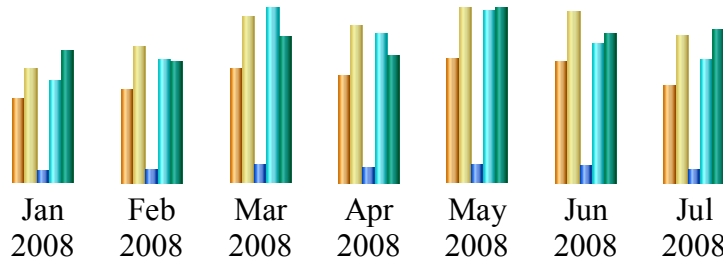


# Website report: Apr - Jun 2008

## Visits to the site

	<i><b>This Quarter</b></i>	<i><b>Last Quarter</b></i>	<i><b>Last Year</b></i>
<b>Total Pages Visited:</b>	139,392	101,798	110,094
<b>Total Unique Visitors:</b>	40,774	33,382	25,175

## Yearly Comparison



Month	Unique visitors	Number of visits	Pages	Hits	Bandwidth
Jan 2008	9531	13045	27587	255328	6.45 GB
Feb 2008	10716	15759	32809	310855	5.98 GB
Mar 2008	13135	19087	41402	454877	7.15 GB
Apr 2008	12396	18287	37967	374322	6.29 GB
May 2008	14287	20899	42661	430762	8.89 GB
Jun 2008	14091	19748	41895	352746	7.34 GB

## Analysis

### Comparisons and Fluctuations:

This quarter shows a spike in the statistics with a clear gain in page views and unique visitors against last year and last quarter. This may be attributed to the TAFE NSW: Doing business in the 21<sup>st</sup> Century consultation process.

This year to date we have had **258,862** page views by our users, compared to this time last year's figure of 196,008 this shows a **32%** increase in page views compared to last year.

The amount of unique users of the site's growth corresponds with this, suggesting the growth is from capturing a wider audience rather than further engaging the current users.

### Notes:

The popularity of Workplace Learning as a topic has increased this month with clear gains in the number of hits, similar trends are being seen with life based learning.

### Overview:

There is a clear increase in the statistics for this quarter. This is a good indication that the new website and the content of the latest eZine issues are engaging a further audience.